



**CENTRALLY MANAGE YOUR
DIRECT-IP PRINTING. EASILY.**

SMART CHANGE STARTS HERE.

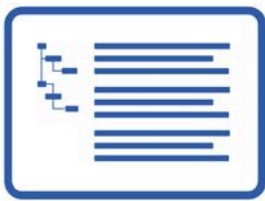


ELIMINATE PRINT SERVERS

PrinterLogic provides a next-generation, centrally managed direct-IP printing platform that allows organizations to eliminate print servers, streamline printing processes, and empower their end users.

- **Centralized management:** Administer all printers from a single web-based console—with or without domains or trusts.
- **Create printers:** Create new printers and automatically deploy them to end users.
- **Modify printers:** Modify printer settings (e.g., driver, port, name, duplexing) and have changes instantly made to printers on end-user workstations.
- **Delete printers:** Remove printers from workstations automatically.

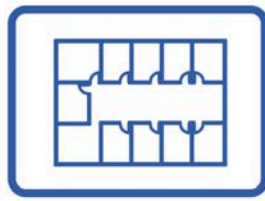
The Three Components of PrinterLogic



Admin Console

Central Repository for Drivers & Settings

The **admin console** provides IT staff with an interface for defining all the printer objects and assigning drivers, profile settings, and deployment options. Settings are configured in profiles and instantly passed down to the endpoint when they are installed. If IT allows users to make changes, these changes are local and will not affect the settings of other users.



Self-Service Portal

Simplifies Printer Installation for End-Users

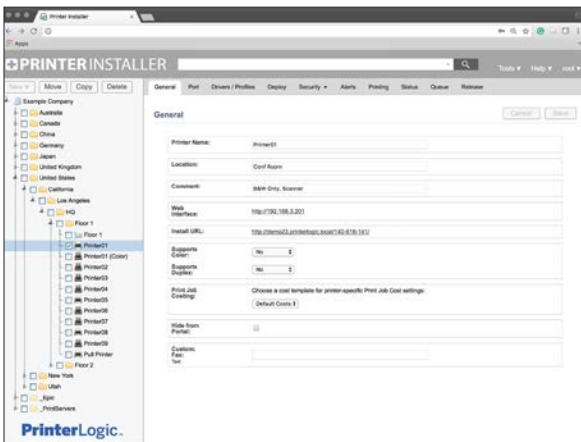
The **self-service portal** is a web-based tool with floorplan maps, which enables end users to easily identify and install nearby printers. Based on the deployment profiles from IT, only authorized printers will be displayed to users when they look at the map, even if other printers are in the vicinity.



Desktop Client

Manage Drivers & Settings on the User Desktop

The **desktop client** is installed on the end-user desktops and acts as the communication liaison between the workstation or virtual client and the admin console. It automatically installs select printers on the user's device and captures usage data that includes user, IP address, and operating system.



The PrinterLogic Admin Console

Admin Console

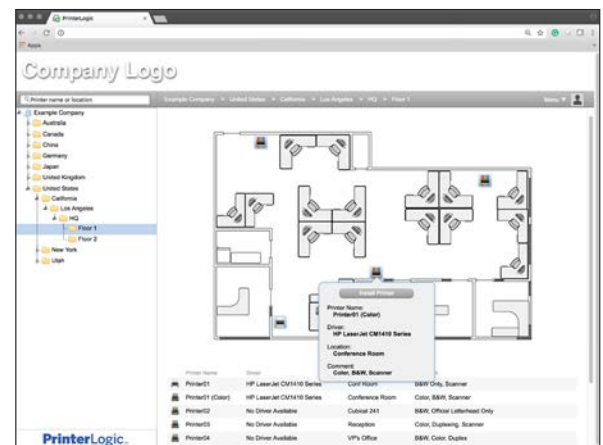
Along with the other powerful print-management features described below, the user-friendly admin console enables IT to add printer drivers and maps that end users can view in PrinterLogic's self-service installation portal.

IT administrators can use this intuitive web-based tool to manage all printers on the current system and configure advanced deployment assignments across the entire organization from a single pane of glass. It also provides a convenient centralized repository for drivers and profile settings.

Self-Service Installation Portal

End users can view their physical location and install nearby printers with a single click.

- **Single enterprise-wide portal:** Provide one consistent printer installation portal across the entire organization.
- **Floorplan maps:** Display optional floorplan maps with single-click self-service printer installation.
- **Open to location:** Enable end users to easily find nearby printers by automatically displaying their current location.
- **Reduce helpdesk calls:** Empower end users to install printers on their own and reduce support tickets.
- **Mixed mode:** Display direct-IP printers and Windows shared printers in the same interface.



The PrinterLogic Self-Service Installation Portal



Date	Time	User Name	Job Title	Computer Name	Manager Name	Department Name	Printer Name	Document Name
2019-04-08	08:42:47 AM	PIB@Wholesale	SE, F	C895	Chris Sumner	Supply Engineering	Pull Printer	RDA.docx
2019-04-08	08:45:18 AM	PIB@Jordan Dvor	PM Manager	C890	Dennis Lutz	Product Management	Pull Printer	Client Plan List.xls
2019-04-08	11:00:21 AM	PIB@Greg Hansen	Sales 1	C804	Bradley Hansen	Sales	Printer016	Client Plan List.xls
2019-04-08	09:02:26 AM	PIB@Jim Hilday	Sales 1	C806	Bradley Hansen	Sales	Printer008	3rd Quarter Proposals.doc
2019-04-08	09:49:53 AM	PIB@Jim Hilday	Sales 1	C806	Bradley Hansen	Sales	Printer002	Client List.xls
2019-04-08	09:31:34 AM	PIB@Tom Beckley	ADM	C802	DJ Malton	Sales	Printer010	Call Center.xls
2019-04-08	01:09:23 AM	PIB@Scott Chandler	PM	C893	Martin Steiner	Human Resources	Printer013	HR Plan.pdf
2019-04-08	04:15:16 AM	PIB@Mike Scott	Janitor	C843	Chris Phelan	Maintenance	Printer016	Supply Order.pdf
2019-04-08	03:10:36 AM	PIB@Mike Scott	Janitor	C843	Chris Phelan	Maintenance	Printer016	Supply Order.pdf

The PrinterLogic Print Auditing & Reporting Console

Features for User Efficiencies

PrinterLogic provides many useful features for control over and visibility into the entire print environment. These include printer status monitoring, print job auditing, and the elimination of scripts and group policy objects (GPOs).

Printer Status Monitoring

The built-in Simple Network Management Protocol (SNMP) console in PrinterLogic shows the status of an entire printer fleet in real-time. Additionally, it can also provide notifications about the status of individual printers, such as low ink or paper, open or empty trays, ping status, operational state, uptime, and lifetime page count.

Print Job Auditing and Reporting

PrinterLogic offers real-time, detailed reporting of print-consumable costs and usage for individual devices as well as entire printer fleets. Capturing basic and advanced data points such as date, time, user, duplexing, and document name can help determine macro- or micro-level printing trends. This information can be automatically emailed to department heads, managers, or other decision-makers on a scheduled basis.

Utilize the data for efficiency initiatives such as infrastructure consolidation or lowering departmental print costs: 70% of PrinterLogic customers have reduced print consumable usage by over 15% in this way.

No Need for GPOs or Scripting

Because PrinterLogic does away with restrictive rights management, any authorized IT or support staff can add and remove printer deployment assignments without admin-level access. The elimination of group policy contingencies and custom scripts also allows for faster user log-ons, reliable orphan printer removal, and the ability to easily set one-time or recurring default printers. The configuration of printer deployments is simplified as well, yet these can still be carried out on the basis of a wide variety of criteria: Active Directory user, computer, group, container, organizational unit (OU), or even IP ranges and MAC addresses.

PRINTERLOGIC ON-PREM OR PRINTERCLOUD? YOU DECIDE.

Solutions That Fit Your Requirements

PrinterLogic provides two discrete print-management software solutions to meet the requirements of your environment. One is the original low-footprint on-premise version. The other is a software-as-a-service (SaaS) cloud-based solution. Both are highly scalable and offer PrinterLogic's powerful suite of print management features with ease of use.

Reducing Costs and Resources for Proven ROI

Printing downtime and interruptions set off a cascade of inefficiencies that effect end users, help-desk operators and technical support staff. Resources that are directed toward these simple printing problems cannot be assigned to more urgent areas. Print-management companies can handle some of these problems, but if they keep a print-server infrastructure in place they are still subject to the same inefficiencies and risks. According to an independent survey, 77% of PrinterLogic customers cut downtime by 15% as a result of its inherent superiority to traditional print-management solutions.

Through features like its self-service installation portal and centralized admin console, PrinterLogic drastically reduces the number of print-related calls to the service desk while enabling administrators to manage printers more efficiently than ever before. In fact, 83% of PrinterLogic customers reduced time spent on printer management by 30% or more. PrinterLogic also integrates seamlessly with virtual solutions like Citrix and VMware, opening up the same benefits to virtual desktop interface (VDI) environments.

Education: Stability and Flexibility for K-12

In K-12 environments, PrinterLogic provides school districts with the robust print-management platform they require coupled with the flexibility to support new educational initiatives. Native support for Chromebook printing, effortless driver management, and self-service printer installation ensure that students and teachers are consistently able to print where and when they need to. The payback is impressive: 95% of PrinterLogic K-12 schools and districts reported spending far less time managing printers, and 89% reported a substantial reduction in help-desk calls. More than half said they broke even on their investment in 18 months or less.

Healthcare: Focus on Patients, Not Printing

PrinterLogic streamlines printing in dynamic healthcare organizations that rely on electronic medical/health record (EMR/EHR) software solutions and dramatically reduces the time required to manage and deploy printers to medical and administrative staff—especially in challenging VDI environments. Advanced deployment features allow for reliable location-based printer deployments, so mobile staff never waste time searching or waiting for printers. Optional pull and mobile printing modules provide increased security, reduced cost, and improved end-user productivity.

Enterprise: A Streamlined Solution for Large-Scale Environments

With PrinterLogic's enterprise print management solution, thousands of organizations have eliminated print servers and gained the ability to manage their entire printer fleet from a single pane of glass—even in globally distributed organizations with fleets numbering in the thousands. PrinterLogic improves printer uptime and reduces help-desk calls by centralizing printer driver deployment and management.

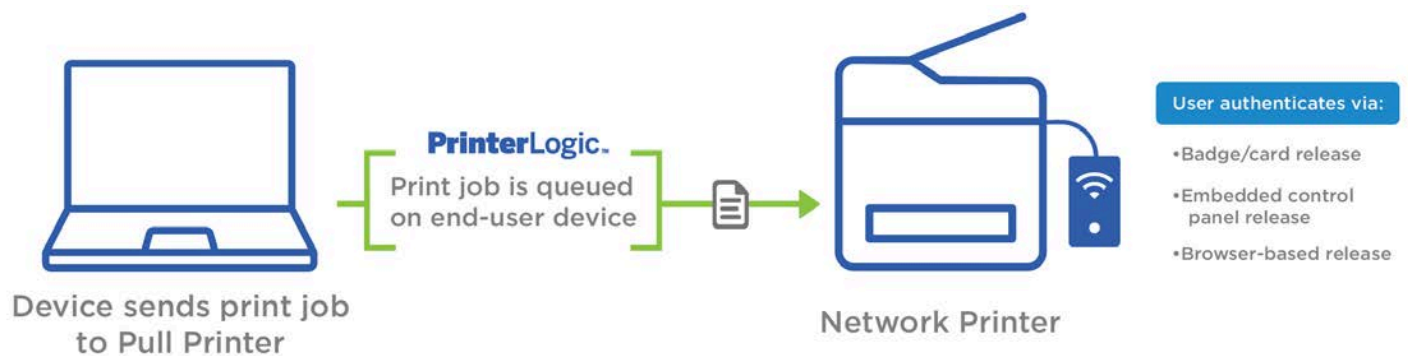


ADDITIONAL FUNCTIONALITY

PrinterLogic has the ability to provide enhanced functionality through its mobile printing and pull printing modules. These deliver full-featured printing for mobile and BYOD users as well as secure printing for confidential documents. These modules integrate seamlessly into any print environment. Control and oversight stay safely in-house while resources and investments are minimized.

Pull Printing

PrinterLogic's pull printing solution offers end users more printing options, reduces waste, and limits unauthorized access to sensitive information. This intuitive solution is perfect for businesses where employees move about and use common terminals, or simply want an easier, more secure way to print to any printer.

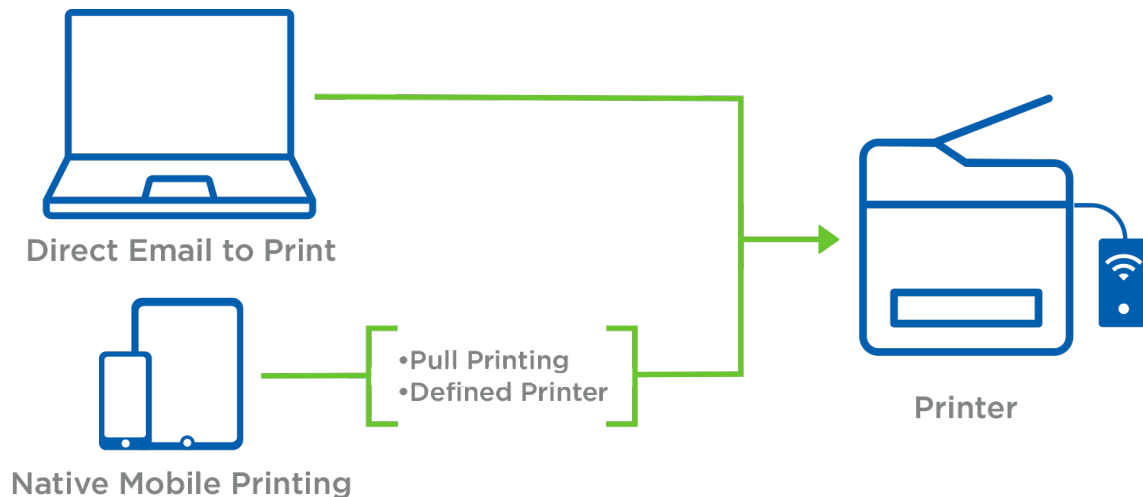


- **Simple and convenient:** Users print to a single global print queue and release the print job to any desired printer.
- **Reduce waste:** Automatically delete abandoned print jobs and conserve consumables.
- **Secure printing:** Users can hold sensitive documents until they are physically at the printer to release (i.e., execute) the print job.
- **Efficient release options:** Authorize document printing with a badge/card scanner, the printer's embedded control panel, or by using any web browser.



Mobile Printing

PrinterLogic's mobile printing solution gives organizations of all sizes the ability to enable mobile, BYOD, and guest users to easily print to the closest printer. This feature works with all makes and models of printer, including legacy devices, and does not require print servers or special client-side software.



- **Seamless integration:** Allow convenient printing from mobile devices in your environment by simply enabling Mobile Printing.
- **Support BYOD:** Guests and contractors can print from any device to any printer without installing additional software.
- **Flexible options:** Use native printing features in iOS and Android or any other device with email-to-print features.

Scalable: A Print Environment That Grows with Your Organization

PrinterLogic scales to accommodate organizations of any size from a single, central server. Our solution can operate an entire printer fleet—even in distributed environments—on minimal infrastructure without the drawbacks of traditional print management solutions. If a host server fails, PrinterLogic's direct-IP backbone allows printing to continue without loss of core functionality. Nearly 80% of PrinterLogic customers have reduced their remote server infrastructure by 30% or more while experiencing significant gains in printer management.

Canon

CANON SOLUTIONS AMERICA

1-800-815-4000 CSA.CANON.COM