

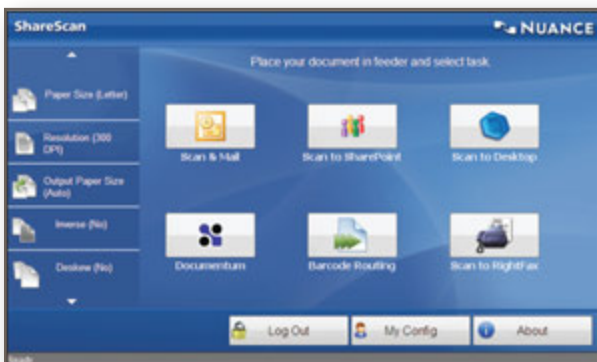
Scan it. Archive it.  
**And now, process it.**



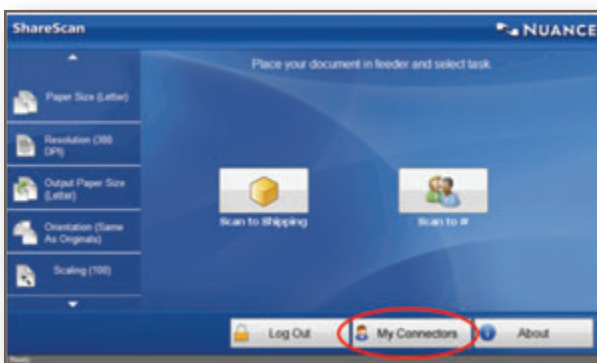
# eCopy ShareScan® v5 takes document distribution to the next level.

While the other solutions are still trying to catch up with the capabilities of ShareScan, Nuance Communications has taken eCopy ShareScan a giant leap forward toward automating document workflow processes. In addition to superior security features and over 100 connectors for many popular back-office applications, the new Extender Service will recognize information contained within scanned documents and automate the processing of the information without human intervention.

## KEY FEATURES FOR END-USERS



Provide custom workflow buttons.



Focus on what matters most.

### • Minimize your time, and maximize your productivity.

With a redesigned user interface, which focuses on ease-of-use, the complexity is taken out of everyday business activities. Using an unlimited number of workflow buttons, there is virtually no limit to the customizations that can be created. By allowing the office worker to create a workflow button, they can now be more productive, completing tasks with fewer touches. You can enjoy these benefits with virtually no downtime and end-user training.

### • What you need, where and when you need it.

Always have access to your personal “favorites” at any MFD with eCopy ShareScan v5 installed. All of your workflows follow you, no matter what device you are utilizing on the network.

### • Convert your hard copy documents into editable formats from your MFD.

By automatically converting your documents into Microsoft® Word, Excel, and PDF files, you no longer need to manually recreate, retype or reformat paper documents. Accurately replicate your paper documents for easier editing.

### • Automate your daily forms processing.

Input forms directly into databases from your imageRUNNER office system. You can help drive business processes to completion right from your MFD. All of this can become embedded into your office workers’ daily workflow, encouraging a “scan to process” behavior.

## KEY FEATURES FOR ADMINISTRATORS

- **Easy to configure and manage.**

A newly redesigned administrator console provides easy access in a single window. This eliminates desktop window clutter and helps to focus attention where it needs to be. The administrator can quickly understand where all configurations, settings or tools are located.

- **Unparalleled configuration, flexibility and control boosts service levels and security.**

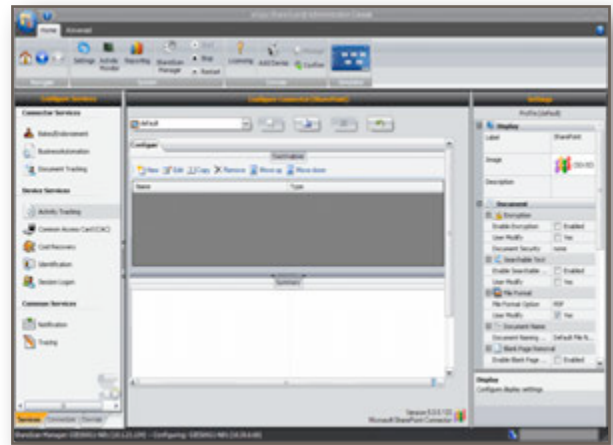
It's a simple process to add new users and devices—inheriting workflow profiles automatically whenever added to a group.

- **Easier to manage and maintain.**

The new highly scalable, fault-resilient, and easy-to-maintain architecture is made possible by ensuring all updates in a single database are accessible from multiple ShareScan managers. Three-tier architecture separates processing and data management. A single, secure backup ensures service continuity by placing all settings and profiles within an SQL database, on a secure server.

- **Enables high service levels and fleet management.**

New graphical reporting can provide administrators with 360° visibility across an entire fleet. Detailed usage reports include inactive devices that can be redeployed across the organization.



Quickly understand where all configurations/settings/tools are located.

## KEY FEATURES OF eCOPY PDF PRO OFFICE

- **An easy-to-use PDF solution.**

Create and share PDF files with any PDF application. Convert PDF files into editable, fully-formatted Microsoft Office and Corel™ WordPerfect® files. Edit directly within a PDF file—adding copy, rearranging words, and even changing graphics.

- **Smarter and more productive network MFD.**

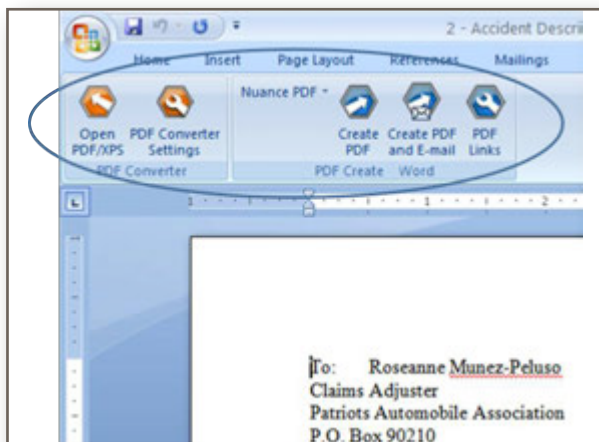
Everyone can scan and share documents. eCopy PDF Pro Office connects directly to the eCopy ShareScan Inbox. This allows you to create a high-speed on-ramp to document workflows. Scans can be sent from any network scanning device to the Scan Inbox.

- **Complete Microsoft Office integration.**

Get all the benefits and features of PDF creation and conversion inside Microsoft Office. Preserve Microsoft Outlook email messages and attachments so that you can store, organize, find and share information as PDF files. Collaborate with co-workers in Microsoft SharePoint® to speed up work and avoid mistakes.

- **Create a document from an existing PDF file.**

Convert from PDF to Word, Excel, PowerPoint, XPS, WordPerfect, and Searchable PDF. Additionally, you can convert documents directly to Microsoft Office 2007 formats (.docx, .xlsx, .pptx).



PDF Pro Office—complete Microsoft Office integration.



## UTILIZE eCOPY TO ITS FULL POTENTIAL WITH PROFESSIONAL SERVICES FROM CANON SOLUTIONS AMERICA

Whether your business is large or small, remaining competitive in the global economy means you need to concentrate on what makes you successful—your core business. Fortunately, there are ways for you to remain focused on what you do best. Canon Solutions America has the team of experts you need to help you acquire the right technology, solutions and services for your organization. From pre-sales analysis to post-sales support, our analysts, engineers, technicians and representatives listen to your needs and then craft specific solutions to help you accomplish your goals.

## CHOOSE FROM A WIDE RANGE OF PROFESSIONAL SERVICES

- **Implementation Services**—Highly skilled installers ensure the solution is installed correctly and tuned for optimal performance.
- **Help Desk Services**—Facilitated by Canon Solutions America shared operations, problems can be triaged and resolved over the phone, reducing downtime while increasing user productivity and satisfaction.
- **Subscription Support Services**—Customers are able to request on-site support from a variety of technical and training resources by simply drawing on their prepaid bank of support units.
- **Training & Education Services**—Professionally delivered training helps customers better utilize the capabilities of their Canon devices and realize the maximum benefit from their technology investment.

**Canon**

CANON SOLUTIONS AMERICA

Canon Solutions America is a registered trademark of Canon Inc. in the United States. All other referenced product names and marks are trademarks of their respective owners and are hereby acknowledged.  
© 2013 Canon Solutions America, Inc. All rights reserved.